

# SHELL GAME

NGV



Have you ever played a matching game? We usually play these sitting at a table or spread out on the floor, but over 800 years ago in Japan a matching game was played which was so large that it needed to be played in an entire room! The game is called *kai-awase* which means 'shell matching' and it's played with 360 pairs of clam shells. The inside of each shell is coated in gold and painted with a beautiful scene, animal or flower. The shells are placed picture side down, in rows or a circular space and players take turns to flip over two shell halves to find a match. Whoever finds the most pairs is the winner!

You can see a *kai-awase* game in *Golden Shells and the Gentle Mastery of Japanese Lacquer* located at NGV International, Level 1, The Pauline Gandel Gallery of Japanese Art.

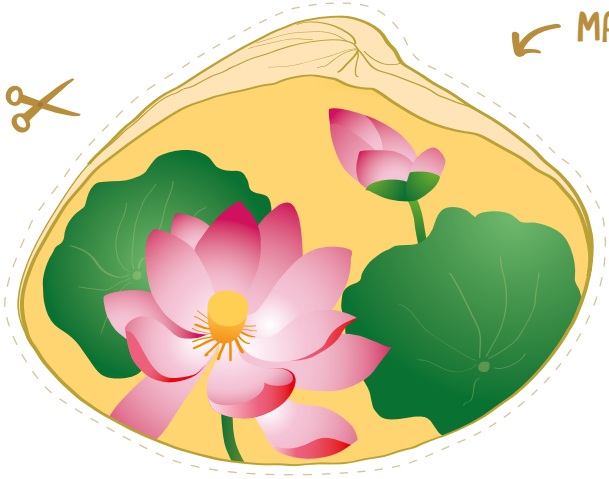
## Let's make a paper shell matching game!

### You will need:

- \* A double-sided printout of pages 2–3 of this activity sheet
- \* Coloured pencils or markers
- \* Scissors
- \* 2–4 players

- 1 Use your art materials to decorate your clam shells. Create matching pairs by decorating two shells the same way.
- 2 Once you have decorated your shells, cut them out by cutting along the dotted lines.
- 3 Gently shuffle your shells and place them on a hard surface with the decorated side facing down.
- 4 Now the game can begin! Each player takes a turn by flipping over two shell halves to find a match. When a match is found remove it from the game. Continue until all the matching pairs have been found. Whoever finds the most pairs wins!

Share your creations by using #NGVKids and tag @ngvmelbourne to be featured.



MATCHING PAIR

