

Misaki Kawai's

# Moko Moko Park Puppet Show

Japanese artist Misaki Kawai loves art, dogs and fluffy things. She also loves puppets. With Misaki turn these pictures into stand-up sculptures and make your own puppet show.

## You will need:

- \* Print outs of puppet and Moko Moko Park pictures
- \* Cardboard from cereal or tissue boxes
- \* Scissors
- \* Glue stick
- \* Your favourite markers or pencils
- \* A table top to set up your show
- \* Plenty of time and an adult to help

## Instructions

- 1 With your coloured markers or pencils complete the puppet and add your drawings to the puppet show sculptures.
- 2 Cut out each picture carefully.
- 3 With the glue stick cover the plain side of the cardboard with a thin coat of glue.
- 4 Stick the pictures to the plain side of the cardboard.
- 5 Trim the edges with the scissors.
- 6 Carefully cut along the dotted lines to make the slots (see diagram 1 below).
- 7 Now cut out the 4 stands for the two dogs, the flowers and the trees. Then cut along the dotted line in the centre for each stand (be careful not cut the piece in two).
- 8 It's time to interlock the pictures and the stands to turn them into sculptures (see diagram 2 below).
- 9 Arrange your park on the table top and then create a puppet show.
- 10 Ask a friend or family member to record your shows.

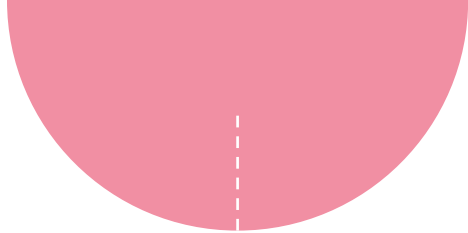
Moko Moko means fluffy in Japanese!



Diagram 1



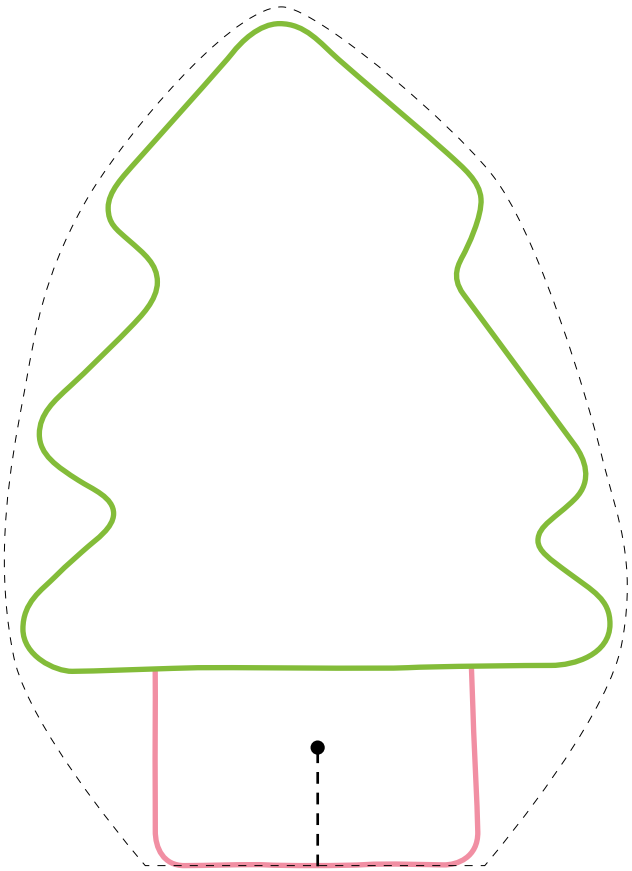
Diagram 2



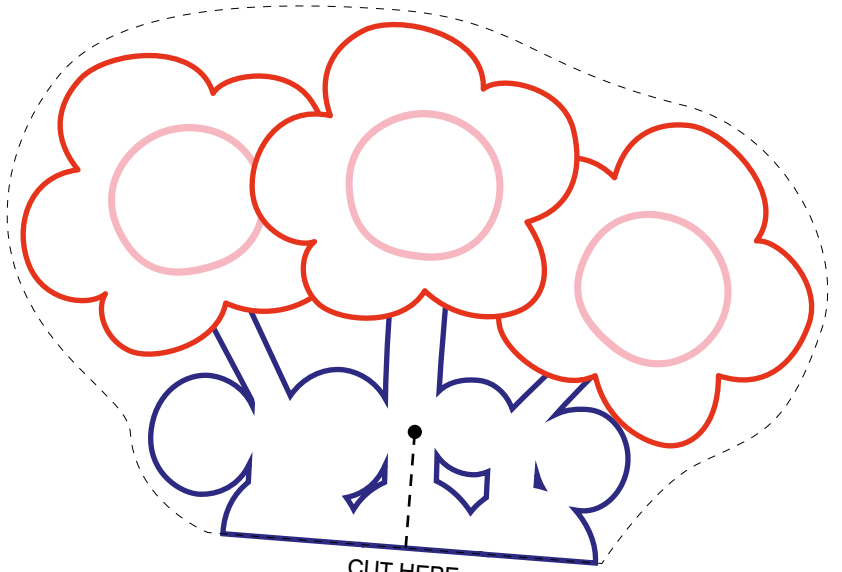
CUT HERE



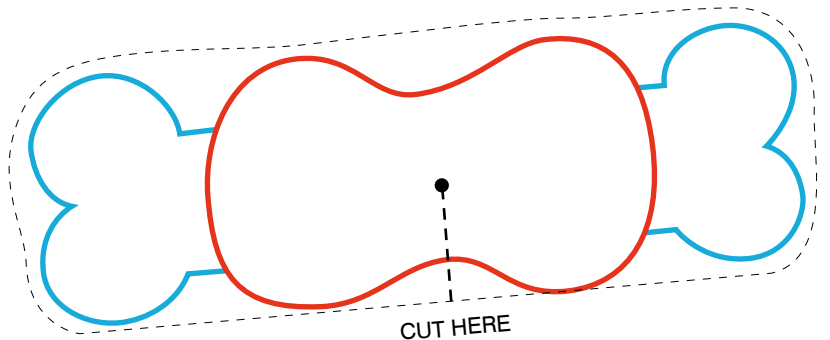
CUT HERE



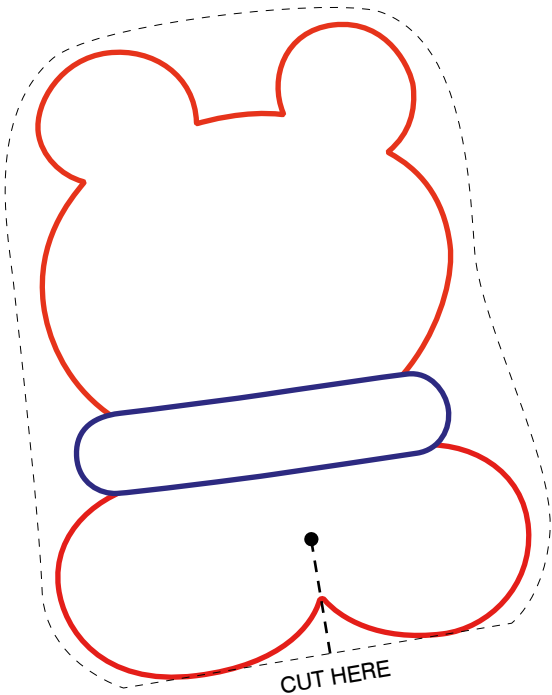
CUT HERE



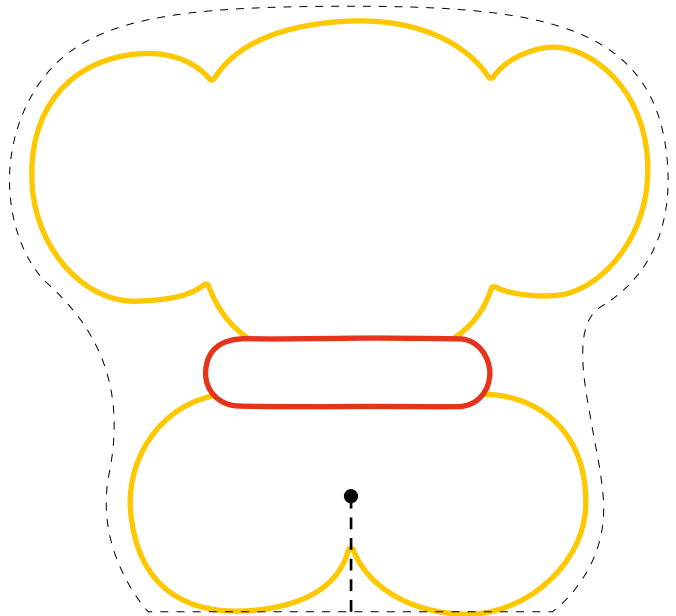
CUT HERE



CUT HERE

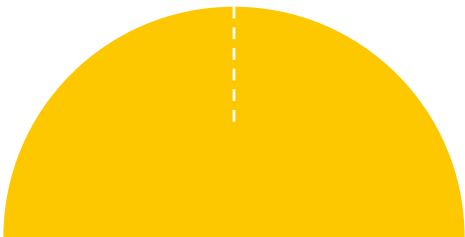


CUT HERE

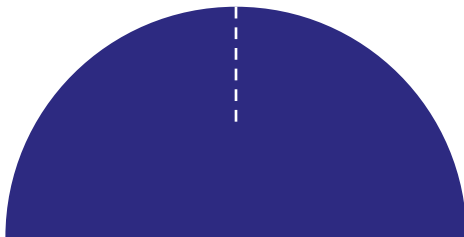


CUT HERE

CUT HERE



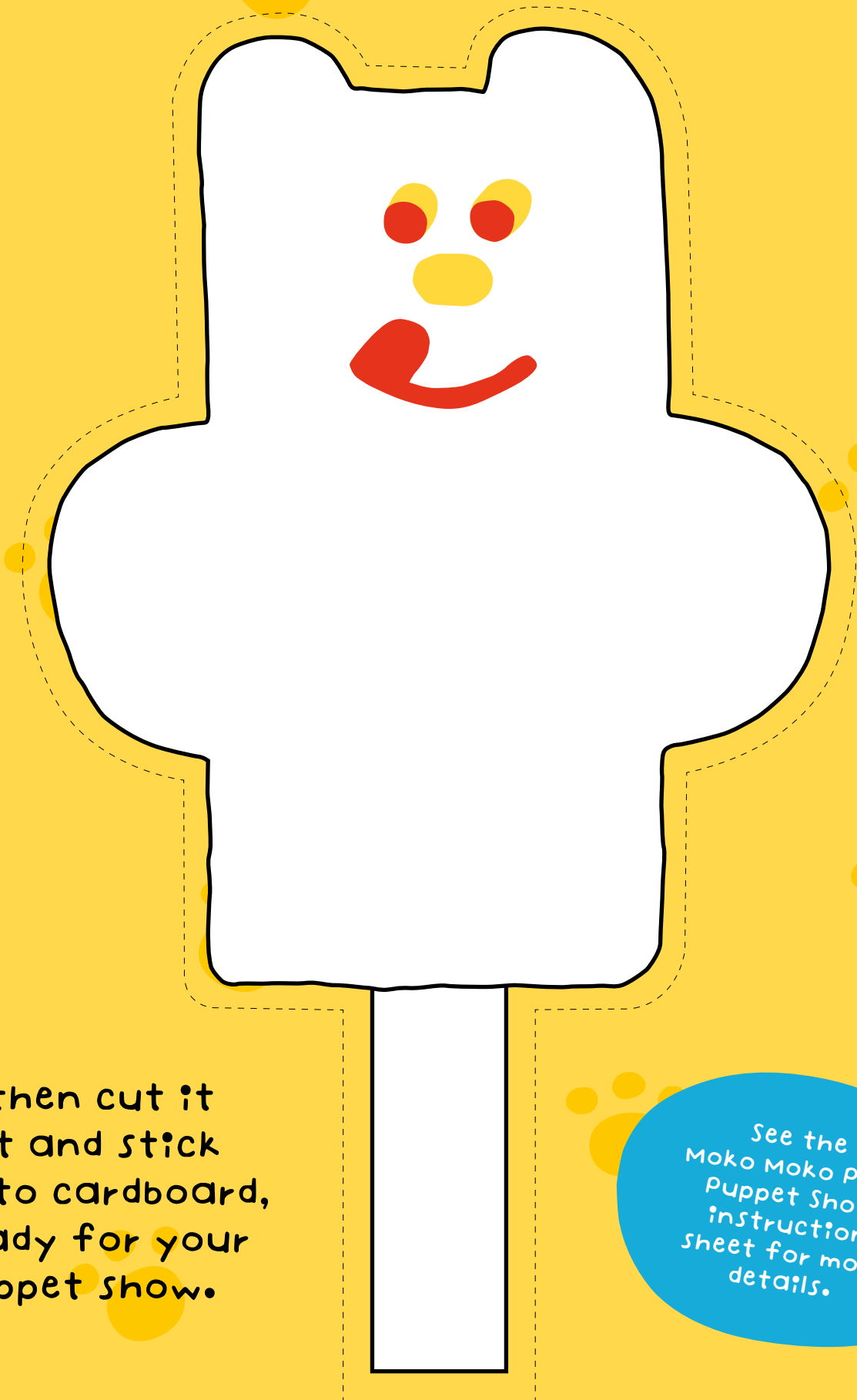
CUT HERE



CUT HERE



Complete this doggy puppet  
with your colourful drawings...



...then cut it  
out and stick  
it to cardboard,  
ready for your  
puppet show.

See the  
Moko Moko park  
puppet show  
instruction  
sheet for more  
details.