



MELBOURNE WINTER MASTERPIECES

MONET'S GARDEN

THE MUSÉE MARMOTTAN MONET, PARIS

Media Kit

National Gallery of Victoria

10 May – 8 September

MEDIA RELEASE

MONET'S GARDEN: THE MUSÉE MARMOTTAN MONET, PARIS

Unknown
Claude Monet outside his house at Giverny 1921
Musée d'Orsay, Paris
© Patrice Schmidt /Musée d'Orsay distribution RMN

On May 10, the National Gallery of Victoria will open this year's Melbourne Winter Masterpieces exhibition, *Monet's Garden: The Musée Marmottan Monet, Paris*, the largest collection of works by Monet ever to come to Australia.

Exclusive to Melbourne, this stunning exhibition will feature more than sixty works devoted to Claude Monet's iconic garden at Giverny.

Monet's Garden traces the evolution of these garden motifs over a period of twenty years, revealing the transition of Monet's purely Impressionist style to the more personal pictorial idiom that he adopted in later life.

'It is set to be a spectacular exhibition that will give audiences an insight into Monet's works, his life and inspiration ...'

Minister for the Arts, Heidi Victoria MP, said the exhibition will bring some of Monet's greatest masterpieces to Australia for the first time.

'Monet is one of the key figures of 19th and 20th century art. He was the grandmaster of Impressionism, an art movement that has inspired artists for more than a century, and he created some of the best known and loved works of the modern era. It is set to be a spectacular exhibition that will give audiences an insight into Monet's works, his life and inspiration and I look forward to welcoming it to Melbourne and to the NGV,' Mrs Victoria said.

NGV Director, Tony Ellwood, said the exhibition would feature Monet's most well-known works, from a stunning suite of enormous waterlilies paintings to his iconic garden motifs, as well as some rarely seen late paintings.

'*Monet's Garden* is a once-in-a-lifetime opportunity to experience the world of Monet and the garden that became his lifelong obsession. We are thrilled to collaborate with the Musée Marmottan, home to one of the largest collections of works by Monet in the world, to bring these masterpieces to Melbourne for the first time,' said Mr Ellwood.

The exhibition will include more than fifty masterpieces from the Musée Marmottan Monet, Paris, as well as other paintings from leading international museums and private collections around the world. Early photographs of the artist and his garden will also be on display.



'Through these paintings, visitors will experience every aspect of Monet's garden; the iconic Japanese footbridge, the waterlilies and other flowers ...'

Opening with a pair of portraits of Claude Monet and his wife Camille painted in 1873 by Pierre-Auguste Renoir, the start of the exhibition tells the story of Monet's early life.

The exhibition then takes visitors on a journey beginning with Monet's arrival in Giverny in 1883 and the first steps taken towards the creation of the garden that would serve as inspiration for the remainder of Monet's life.

The first section of the show will include a series of paintings that Monet produced during the years the garden at Giverny was being laid out. These were created in Normandy, in the valley of the Seine, or during Monet's travels to Norway and London. Highlights include *Field of yellow irises at Giverny 1887* and *Houses of Parliament, reflections on the Thames 1905*.

The second section of the exhibition will consist entirely of paintings representing Monet's beautiful garden at Giverny, produced between 1897 and 1925.

Mr Ellwood said: 'Through these paintings, visitors will experience every aspect of Monet's garden; the iconic Japanese footbridge, the waterlilies and other flowers including irises, agapanthus, wisteria, the weeping willow and the alley of roses.'

'The show concludes with a spectacular, specially commissioned filmic installation which will immerse visitors in

the daily beauty of Monet's garden as it is today. Entitled the Last Day at Giverny, it will present Monet's beautiful garden from sunrise to sunset on the last day of the season last year. This curved display will surround and embrace visitors leaving a powerful parting impression of Monet's garden,' said Mr Ellwood.

The exhibition will also present a series of rarely seen late works by Monet; some of the last easel paintings created in the garden in Giverny as the artist began to lose his sight. These works represent a radical departure from Monet's earlier style and will provide visitors to the exhibition with the unique opportunity to explore a lesser known period in the artist's life.

'The show concludes with a specially commissioned filmic installation which will immerse visitors in the daily beauty of Monet's garden as it is today.'

This will be the tenth Melbourne Winter Masterpieces exhibition at the NGV since the series began in 2004 with *The Impressionists*. It has since attracted more than 3.5 million people to Melbourne's cultural institutions. *Monet's Garden* will be presented alongside *Hollywood Costume* at the Australian Centre for the Moving Image in 2013.

The exhibition is organised by the Musée Marmottan Monet, Paris in association with the National Gallery of Victoria and Art Exhibitions Australia.

Monet's Garden will be on at the National Gallery of Victoria from 10 May until 8 September 2013. Tickets on sale now. Adult \$26 / Child \$10 / Concession \$22.50.

Join the conversation and be the first to know



THE EXHIBITION

Portraits

In the first section of the exhibition, audiences will enter the private world of Claude Monet (1840–1926) and his family through a selection of early family portraits.

Celebrated Impressionist, friend and contemporary of Monet, Pierre-Auguste Renoir, painted individual portraits of Monet and his first wife Camille. These beautiful works will be on display alongside two portraits Monet painted of his eldest sons Jean and Michel, when they were young boys.

Seine Valley

Monet gravitated to water – rivers, snow, coast line and ultimately his waterlily pond. The Seine was a central subject for Monet throughout his life, and he captured its many aspects in the course of his long career.

In 1871 Monet settled with his first wife Camille and his son in Argenteuil, and seven years later he relocated his ailing wife and two sons to Vétheuil, along with a second family, his patrons Ernst and Alice Hoschedé, whose fortune had been suddenly lost, and their six children. Later, following the death of Camille and Ernst, Monet would marry Alice and play the role of father to her six children. The exhibition includes an extensive selection of landscapes from this period, such as *Taking a walk near Argenteuil* 1875, *The banks of the Seine* or *Springtime, through the branches* 1878 and *Vétheuil in the fog* 1879.

These colour-flecked paintings capture the shifting light of day, water reflections, seasonal change and encroaching modernity. These works also highlight Monet's fascination with water and light, its entrancing nature and the founding ideas of Impressionism. By 1883 Monet's quest for a rural haven by the Seine, where he could raise a large family and paint local motifs came to an end, with his discovery of Le Pressoir an old farmhouse and former cider press in the small town of Giverny half-way between Paris and the Normandy coast. Giverny and its environs were to yield up subjects for Monet's most iconic painted series of the 1880s and 1890s that would make his name and fortune. The garden beds in the sloping grounds of Le Pressoir quickly became a preoccupation for Monet and his family who enthusiastically embraced its care and cultivation.



(LEFT)
Pierre Auguste Renoir
Claude Monet (1840-1926) reading a newspaper (Claude Monet lisant) 1873
Musée Marmottan Monet, Paris
© Musée Marmottan Monet, Paris
© Bridgeman-Giraudon / Presse

(BELOW)
Claude Monet
Taking a walk near Argenteuil (En promenade près d'Argenteuil) 1875
Musée Marmottan Monet, Paris
Gift of Mrs Nelly Sergeant-Duhem, 1985 (inv. 5332)
© Musée Marmottan Monet, Paris
© Bridgeman-Giraudon / Presse



A stunning selection of paintings and oil sketches from this sojourns will include *The sailing boat, evening effect* 1885, *The beach at Pourville, sunset* 1882 and *Cliff and the Porte d'Amont, morning effect* 1885.

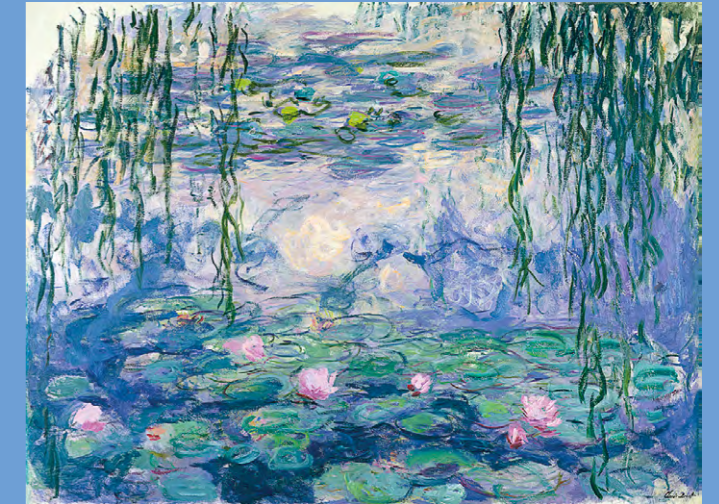
Monet's interest in artistic developments (and markets) abroad drew him to London on several occasions between 1870 and 1901 and in his paintings visitors will see the influences of English painters such as J. M. W. Turner. Monet's exquisite rendering of *Houses of Parliament, reflections on the Thames* 1905 will be on display as will be some iconic images of Charing Cross Bridge. In 1895 Monet travelled to Norway, then a subject of fashionable interest in French avant-garde circles, to see his stepson, Jacques and to discover new motifs.

A jewel-like selection of works depicting the brightly coloured houses and vibrant sunsets of Norway record this visit, where Monet was feted as an artistic giant.

The Garden

Having led the first wave of young Impressionists in the early 1870s, Monet branched out on his own from the 1880s. He left behind Paris, and the signs of modernity to focus on a world of nature and its fragile, transient beauties. From Giverny Monet offered his generation a vision of a peaceful, glowing nature that could continually restore humankind. The exquisite canvases of waterlilies, the ponds and the flowering plants that hugged their edges will captivate and delight visitors to *Monet's Garden*. The vision of light and nature that Monet celebrated in his painting would offer sustenance and hope to Monet in the dark years of the First World War as everything precious to France seemed suddenly under threat. The extraordinary

(RIGHT)
Claude Monet
Waterlilies (Nymphéas) 1916–19
Musée Marmottan Monet, Paris
Gift of Michel Monet, 1966 (inv. 5164)
© Musée Marmottan Monet, Paris
© Bridgeman-Giraudon / Presse



paintings of his garden grew in size and scope from private into fully public dimensions.

Through a magnificent and sweeping series of paintings, visitors will experience every facet of Monet's garden; the iconic Japanese footbridge and water lily ponds, but also the irises, agapanthus, wisteria, weeping willow and alleys of roses with which Monet surrounded himself and which he painted repeatedly. An absolute must-see highlight of the exhibition is a stunning suite of waterlilies paintings that Monet completed between 1900 and 1919.

The Japanese footbridge dominates the series known as the 'Waterlily ponds', painted between 1899 and 1900. These figurative works are poetic renditions of the idyllic landscape envisaged by Monet and are perhaps the most celebrated of his oeuvre.

Experience Monet's Garden

Today, Monet's garden at Giverny continues to inspire visitors from around the world.

To close the exhibition, a spectacular, specially commissioned filmic display will immerse visitors in the daily beauty of Monet's garden as it is today.

LIST OF WORKS

All works © Musée Marmottan Monet, Paris © Bridgeman-Giraudon / Presse unless otherwise indicated



Pierre Auguste Renoir
French 1841–1919
Claude Monet reading
(*Claude Monet lisant*) (1873)
Musée Marmottan Monet, Paris
Gift of Michel Monet, 1966 (inv. 5013)



Pierre Auguste Renoir
Portrait of Madame Claude Monet
(*Portrait de Madame Claude Monet*) (1873)
Musée Marmottan Monet, Paris
Gift of Michel Monet, 1966 (inv. 5013 bis)



Claude Monet
Taking a walk near Argenteuil (*En promenade près d'Argenteuil*) (1875)
Musée Marmottan Monet, Paris
Gift of Mrs Nelly Sergeant-Duhem, 1985 (inv. 5332)



Claude Monet
Springtime, through the branches (*Le Printemps, à travers les branches*) 1878
Musée Marmottan Monet, Paris
Gift of Mr and Mrs Donop de Monchy, 1940 (inv. 4018)



Claude Monet
The Seine at Port-Villez, evening effect (*La Seine à Port-Villez, effet du soir*) (1894)
Musée Marmottan Monet, Paris
Gift of Michel Monet, 1966 (inv. 5025)



Claude Monet
The Seine at Port-Villez, rose effect (*La Seine à Port-Villez, effet rose*) (1894)
Musée Marmottan Monet, Paris
Gift of Michel Monet, 1966 (inv. 5002)



Claude Monet
Mount Kolsaas, Norway (*Le Mont Kolsaas en Norvège*) (1895)
Musée Marmottan Monet, Paris
Gift of Michel Monet, 1966 (inv. 5100)



Claude Monet
Norway, the red houses at Bjørnegaard (*Norvège, les maisons rouges à Bjørnegaard*) (1895)
Musée Marmottan Monet, Paris
Gift of Michel Monet, 1966 (inv. 5170)



Claude Monet
Vétheuil in the fog (*Vétheuil dans le brouillard*) 1879
Musée Marmottan Monet, Paris
Gift of Michel Monet, 1966 (inv. 5024)



Claude Monet
Vétheuil (1879)
National Gallery of Victoria, Melbourne
Felton Bequest, 1937 (406-4)
Photo: National Gallery of Victoria, Melbourne



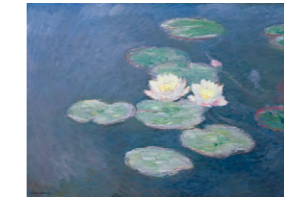
Claude Monet
Portrait of Jean Monet (*Portrait de Jean Monet*) 1880
Musée Marmottan Monet, Paris
Gift of Michel Monet, 1966 (inv. 5021)



Claude Monet
Portrait of Michel wearing a hat with a pompon (*Portrait de Michel en bonnet à pompon*) (1880)
Musée Marmottan Monet, Paris
Gift of Michel Monet, 1966 (inv. 5018)



Claude Monet
Norwegian landscape, the blue houses (*Paysage de Norvège, les maisons bleues*) (1895)
Musée Marmottan Monet, Paris
Gift of Michel Monet, 1966 (inv. 5169)



Claude Monet
Waterlilies, evening effect (*Nymphéas, effet du soir*) (1897)
Musée Marmottan Monet, Paris
Gift of Michel Monet, 1966 (inv. 5167)



Claude Monet
Charing Cross Bridge (*sketch*) (*Charing Cross Bridge (esquisse)*) (1899–1901)
Musée Marmottan Monet, Paris
Gift of Michel Monet, 1966 (inv. 5101)



Claude Monet
Waterloo Bridge (1899–1901)
Kerry Stokes Collection, Perth
Photo: Jenni Carter



Claude Monet
The beach at Pourville, sunset (*La Plage à Pourville, soleil couchant*) (1882)
Musée Marmottan Monet, Paris
Gift of Michel Monet, 1966 (inv. 5008)



Claude Monet
Rough weather at Étretat (*Gros temps à Étretat*) (1883)
National Gallery of Victoria, Melbourne
Felton Bequest, 1913 (582-2)
Photo: National Gallery of Victoria, Melbourne



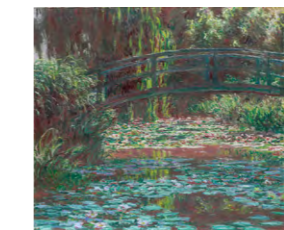
Claude Monet
An arm of the Seine at Giverny (*Bras de Seine à Giverny*) (1885)
Musée Marmottan Monet, Paris
Gift of Michel Monet, 1966 (inv. 5175)



Claude Monet
Cliff and the Porte d'Amont, morning effect (*Falaise et porte d'Amont, effet du matin*) (1885)
Musée Marmottan Monet, Paris
Gift of Michel Monet, 1966 (inv. 5010)



Claude Monet
Charing Cross Bridge, smoke in fog, impression (*Charing Cross Bridge, fumée dans le brouillard, impression*) (1902)
Musée Marmottan Monet, Paris
Gift of Michel Monet, 1966 (inv. 5001)



Claude Monet
The bridge over the waterlily pond 1900
Art Institute of Chicago, Illinois
Mr and Mrs Lewis Larned Coburn Memorial Collection, 1923 (inv. 33.441)
Photo: Art Institute of Chicago, Illinois



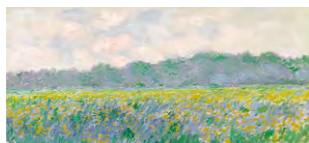
Claude Monet
Waterlilies (*Nymphéas*) 1903
Bridgestone Museum of Art, Tokyo
Ishibashi Foundation, 1961 (F.P.22)
Photo: Bridgestone Museum of Art, Tokyo



Claude Monet
Waterlilies (*Nymphéas*) (1903)
Musée Marmottan Monet, Paris
Gift of Michel Monet, 1966 (inv. 5163)



Claude Monet
The sailing boat, evening effect (*Le Voilier, effet du soir*) (1885)
Musée Marmottan Monet, Paris
Gift of Michel Monet, 1966 (inv. 5171)



Claude Monet
Field of yellow irises at Giverny (*Champ d'iris jaunes à Giverny*) (1887)
Musée Marmottan Monet, Paris
Gift of Michel Monet, 1966 (inv. 5172)



Claude Monet
White clematis (*Clématites blanches*) (1887)
Musée Marmottan Monet, Paris
Gift of Michel Monet, 1966 (inv. 5011)



Claude Monet
Rouen Cathedral, at the end of day, sunlight effect (*Cathédrale de Rouen, effet de soleil, fin de journée*) (1892)
Musée Marmottan Monet, Paris
Gift of Michel Monet, 1966 (inv. 5174)



Claude Monet
Houses of Parliament, reflections on the Thames (*Le Parlement, reflets sur la Tamise*) 1905
Musée Marmottan Monet, Paris
Gift of Michel Monet, 1966 (inv. 5007)



Claude Monet
Waterlilies (*Nymphéas*) 1907
The Museum of Fine Arts, Houston, Texas
Gift of Mrs Harry C. Hanszen, 1988 (68.31)
Photo: Thomas R. Dybrock/The Museum of Fine Arts, Houston, Texas



Claude Monet
Waterlilies (*Nymphéas*) 1907
Musée Marmottan Monet, Paris
Gift of Michel Monet, 1966 (inv. 5168)



Claude Monet
Waterlilies (*Nymphéas*) 1907
Saint-Étienne Métropole, Musée(s) Art Moderne, Saint-Étienne
Gauthier Dumond Bequest, 1924 (inv. 924)
Photo: Yves Bresson/Saint-Étienne Métropole Musée(s) Art Moderne

LIST OF WORKS (continued)

All works © Musée Marmottan Monet, Paris © Bridgeman-Giraudon / Presse unless otherwise indicated



Claude Monet
Waterlilies, study (Nymphéas, étude)
 (1907)
 Musée Marmottan Monet, Paris
 Gift of Michel Monet, 1966 (inv. 5109)



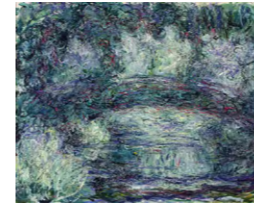
Claude Monet
Waterlilies (Nymphéas) 1908
 Fuji Art Museum, Tokyo
 Purchased, 1974
 Photo: Fuji Art Museum, Tokyo



Claude Monet
Hemerocallis (Daylilies) (Les Hémérocalles) (1914–17)
 Musée Marmottan Monet, Paris
 Gift of Michel Monet, 1966 (inv. 5097)



Claude Monet
Waterlilies (Nymphéas) (1914–17)
 Musée Marmottan Monet, Paris
 Gift of Michel Monet, 1966 (inv. 5085)



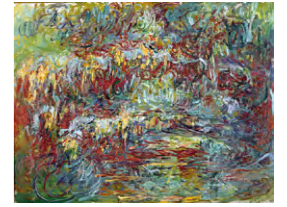
Claude Monet
The Japanese bridge (Le Pont Japonais)
 (1918–19)
 Musée Marmottan Monet, Paris
 Gift of Michel Monet, 1966 (inv. 5177)



Claude Monet
Weeping willow (Saufle pleureur)
 (1918–19)
 Musée Marmottan Monet, Paris
 Gift of Michel Monet, 1966 (inv. 5081)



Claude Monet
The Japanese bridge (Le Pont Japonais)
 (1918–24)
 Musée Marmottan Monet, Paris
 Gift of Michel Monet, 1966 (inv. 5093)



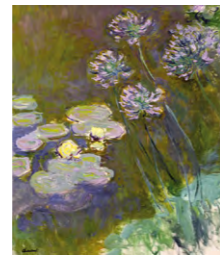
Claude Monet
The Japanese bridge (Le Pont Japonais)
 (1918–24)
 Musée Marmottan Monet, Paris
 Gift of Michel Monet, 1966 (inv. 5106)



Claude Monet
Waterlilies (Nymphéas) (1914–17)
 Musée Marmottan Monet, Paris
 Gift of Michel Monet, 1966 (inv. 5115)



Claude Monet
Waterlilies (Nymphéas) (1914–17)
 Musée Marmottan Monet, Paris
 Gift of Michel Monet, 1966 (inv. 5116)



Claude Monet
Waterlilies and agapanthus (Nymphéas et agapanthes) (1914–17)
 Musée Marmottan Monet, Paris
 Gift of Michel Monet, 1966 (inv. 5084)



Claude Monet
Waterlilies (Nymphéas) (c.1914–17)
 National Gallery of Australia, Canberra
 Purchased, 1979 (NGA 1979.2858)
 Photo: National Gallery of Australia, Canberra



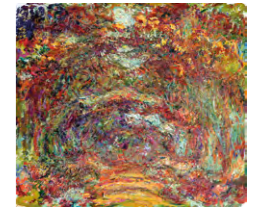
Claude Monet
Wisteria (Glycines) (1919–20)
 Musée Marmottan Monet, Paris
 Gift of Michel Monet, 1966 (inv. 5124)



Claude Monet
The path under the rose arches (L'Allée des rosiers) (1920–22)
 Musée Marmottan Monet, Paris
 Gift of Michel Monet, 1966 (inv. 5090)



Claude Monet
The path under the rose arches (L'Allée des rosiers) (1920–22)
 Musée Marmottan Monet, Paris
 Gift of Michel Monet, 1966 (inv. 5104)



Claude Monet
The path under the rose arches (L'Allée des rosiers) (1920–22)
 Musée Marmottan Monet, Paris
 Gift of Michel Monet, 1966 (inv. 5089)



Claude Monet
Waterlilies (Nymphéas) (1916–19)
 Musée Marmottan Monet, Paris
 Gift of Michel Monet, 1966 (inv. 5117)



Claude Monet
Waterlilies (Nymphéas) (1916–19)
 Musée Marmottan Monet, Paris
 Gift of Michel Monet, 1966 (inv. 5098)



Claude Monet
Waterlilies (Nymphéas) (1916–19)
 Musée Marmottan Monet, Paris
 Gift of Michel Monet, 1966 (inv. 5164)



Claude Monet
Waterlilies, reflections of weeping willows (Nymphéas, reflets de saule) (1916–19)
 Musée Marmottan Monet, Paris
 Gift of Michel Monet, 1966 (inv. 5122)



Claude Monet
Weeping willow (Saufle pleureur)
 (1921–22)
 Musée Marmottan Monet, Paris
 Gift of Michel Monet, 1966 (inv. 5107)



Claude Monet
The garden at Giverny (Le Jardin à Giverny) (1922–26)
 Musée Marmottan Monet, Paris
 Gift of Michel Monet, 1966 (inv. 5102)



Claude Monet
The house seen from the rose garden (La Maison vue du jardin aux roses) (1922–24)
 Musée Marmottan Monet, Paris
 Gift of Michel Monet, 1966 (inv. 5086)



Claude Monet
The house seen from the rose garden (La Maison vue du jardin aux roses) (1922–24)
 Musée Marmottan Monet, Paris
 Gift of Michel Monet, 1966 (inv. 5087)



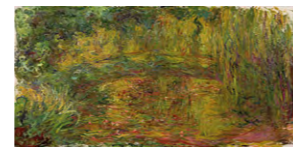
Claude Monet
Weeping willow and the waterlily pond (Saufle pleureur et bassin aux nymphéas) (1916–19)
 Musée Marmottan Monet, Paris
 Gift of Michel Monet, 1966 (inv. 5125)



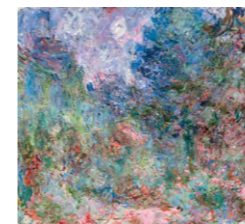
Claude Monet
Boats in the port of Honfleur (sketch) (Bateaux dans le port de Honfleur (esquisse)) (1917)
 Musée Marmottan Monet, Paris
 Gift of Michel Monet, 1966 (inv. 5022)



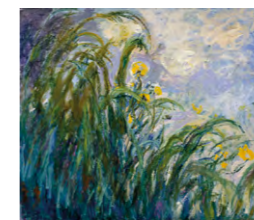
Claude Monet
Waterlilies (Nymphéas) (1917–19)
 Musée Marmottan Monet, Paris
 Gift of Michel Monet, 1966 (inv. 5118)



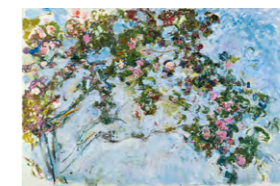
Claude Monet
The Japanese bridge (Le Pont Japonais) (1918)
 Musée Marmottan Monet, Paris
 Gift of Michel Monet, 1966 (inv. 5077)



Claude Monet
The house seen from the rose garden (La Maison vue du jardin aux roses) (1922–24)
 Musée Marmottan Monet, Paris
 Gift of Michel Monet, 1966 (inv. 5103)



Claude Monet
Yellow irises (Iris jaunes) (1924–25)
 Musée Marmottan Monet, Paris
 Gift of Michel Monet, 1966 (inv. 5095)

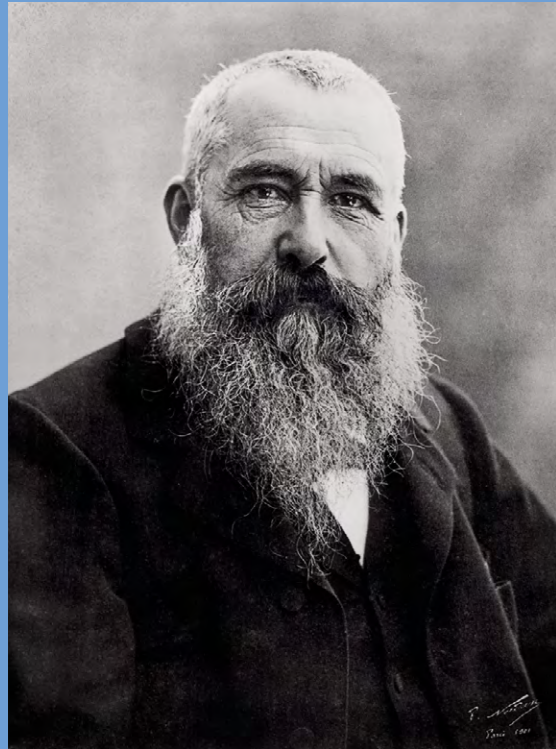


Claude Monet
Roses (Les Roses) (1925–26)
 Musée Marmottan Monet, Paris
 Gift of Michel Monet, 1966 (inv. 5096)



Monet's palette
Monet's pipe
Claude Monet's corrective glasses (Lunette d'opéré de Claude Monet) 1924
 Musée Marmottan Monet, Paris
 Gift of Michel Monet, 1966 (inv. 5137, 5188, 5187)

MESSAGES



Musée Marmottan Monet, Paris

In 1966, Michel Monet, Claude Monet's second son, bequeathed his property in Giverny to the French Academy of Fine Arts and his collection of paintings, inherited from his father, to the Musée Marmottan, Paris. This donation endowed the Musée Marmottan Monet, Paris with the largest Claude Monet collection in the world. The NGV is honoured to be collaborating with the Musée Marmottan Monet, Paris for the 2013 Melbourne Winter Masterpieces exhibition, *Monet's Garden: The Musée Marmottan Monet, Paris*.



Message from the State Government

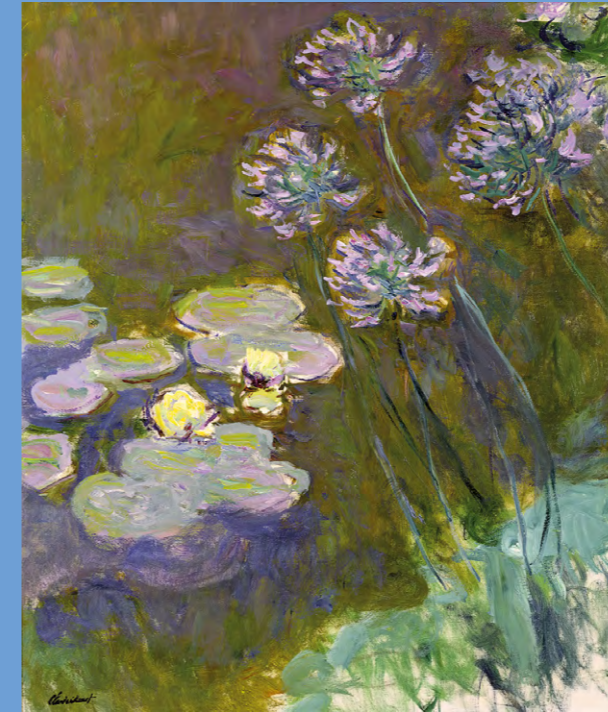
The Victorian Government is proud to support *Monet's Garden: The Musée Marmottan Monet, Paris*, the latest exhibition in the Melbourne Winter Masterpieces series at the National Gallery of Victoria. Initiated in 2004, the Melbourne Winter Masterpieces series brings outstanding works of art from the world's greatest collections to Melbourne in the winter months for all to enjoy. Now in its tenth year, the exhibitions have been seen by more than 3.8 million visitors and have generated significant economic benefits for Victoria. *Monet's Garden* is another stand-out exhibition, and another Melbourne exclusive. It includes over sixty paintings by the grandmaster of Impressionism, most of which are being loaned by the Musée Marmottan Monet, Paris, home to the largest single collection of works by Claude Monet. Audiences will gain an insight into these beautiful works of art, the man behind them and his greatest inspiration, his beloved garden at Giverny. The exhibition features iconic and well-loved paintings tracing Monet's journey to and time at Giverny, as well as a spectacular suite of enormous waterlily paintings and rarely exhibited radical late works. This collaboration between the Musée Marmottan Monet, NGV and Art Exhibitions Australia brings these spectacular paintings to Melbourne, and Australia, for the first time. It's a stunning exhibition and a once-in-a-lifetime opportunity to see so many of Monet's great works here in Melbourne. Enjoy.

HEIDI VICTORIA MP
Minister for the Arts



(LEFT)
Nadar
Portrait of Claude Monet 1901
Musée Marmottan Monet, Paris

(BELOW)
Claude Monet
Waterlilies and agapanthus
(*Nymphéas et agapanthes*) 1914-17
Musée Marmottan Monet, Paris
Gift of Michel Monet, 1966 (inv. 5084)
© Musée Marmottan Monet, Paris
© Bridgeman-Giraudon / Presse



Mazda Australia

Mazda Australia has enjoyed a longstanding relationship with Art Exhibitions Australia and the National Gallery of Victoria over many years and we are delighted to be Principal Sponsor of this year's Melbourne Winter Masterpieces *Monet's Garden*, an exclusive collection that has travelled to Australia from The Musée Marmottan Monet, Paris.

Just as *Monet's Garden* is sure to immerse crowds in the spectacular beauty of Monet's work, Mazda aims to create a similar feeling for drivers and passengers alike through the design and style of our vehicles, which is what we like to call 'Zoom Zoom'.

Through our support of Art Exhibitions Australia, Mazda hopes to enrich Australia's renowned cultural scene and help give back to the community that continually supports us.

We sincerely hope that everyone who visits *Monet's Garden* has an experience to remember.

MARTIN BENDERS
Managing Director, Mazda Australia



Singapore Airlines

Singapore Airlines is proud to be supporting *Monet's Garden: The Musée Marmottan Monet, Paris* at the National Gallery of Victoria, Australia's most prestigious art museum, as Principal Donor. This stunning exhibition marks the 33rd time that the Airline has partnered with Art Exhibitions Australia, one of the Airlines' longest-standing partnerships in Australia.

Now spanning 25 years, the partnership between Singapore Airlines and Art Exhibitions Australia began when *The Gold of the Pharaohs* collection was brought to Australian audiences in 1988. Since then, the partnership has seen some of the most significant exhibitions of international works to come to Australia, including *Picasso Masterpieces*, *Portrait of Spain: Masterpieces from the Prado* and, most recently, *Turner from the Tate: The Making of a Master*.

In 2012, Singapore Airlines celebrated important milestones marking 45 years of service to Australia as well as the fifth anniversary of the first A380 flight. This year will see further capacity increases for Singapore Airlines, including an increase to four flights daily between Melbourne and Singapore from 1 July.

Globally, Singapore Airlines' network, including Singapore Airlines Cargo and SilkAir destinations, covers a total of 105 destinations in 39 countries.

SUBHAS MENON
Singapore Airlines Regional Vice President South West Pacific



MESSAGES (continued)

(LEFT)
Claude Monet
Roses (Les Roses) (1925-26)
Musée Marmottan Monet, Paris
Gift of Michel Monet, 1966 (inv. 5096)
© Musée Marmottan Monet, Paris
© Bridgeman-Giraudon / Presse

(BELOW)
Claude Monet
Vétheuil (1879)
National Gallery of Victoria, Melbourne
Felton Bequest, 1937 (406-4)
Photo: National Gallery of Victoria,
Melbourne



Ernst & Young

Ernst & Young has been involved with the National Gallery of Victoria for almost ten years and we are delighted to continue the association for the 2013 Melbourne Winter Masterpieces exhibition. Our long history of supporting the arts locally and globally is one of the ways we inspire our people, clients and communities to achieve their potential.



The Australian

The Australian is proud to partner with Art Exhibitions Australia and the National Gallery of Victoria for the *Monet's Garden: The Musee Marmottan Monet, Paris* exhibition in 2013.

Every week we bring the best in Arts and Entertainment to our audience around the nation and we know this is an area they are highly engaged with, so partnering with such a high profile exhibition will have mutual benefits for both parties.

We anticipate that many of our readers from interstate will take the opportunity to travel to Melbourne during the exhibition season. And we're proud to be supporters and facilitators of one the year's most high profile and prestigious cultural events in Australia.



Seven Network

Channel Seven Melbourne is proud to once again partner with Art Exhibitions Australia and National Gallery of Victoria for the Melbourne Winter Masterpieces series.

Monet's Garden is a true celebration of some of Monet's greatest masterpieces presented in the idyllic setting of Melbourne's NGV.



Sofitel Melbourne on Collins

As the Hotel For the Arts in Melbourne, Sofitel Melbourne On Collins is proud to join with Art Exhibitions Australia and the National Gallery of Victoria to support the Melbourne Winter Masterpieces *Monet's Garden* exhibition which will be on show at the NGV from May to September. Sofitel Melbourne On Collins has been a sponsor of Melbourne Winter Masterpieces since inception and greatly values this special relationship. We are very much looking forward to the wonderful opportunity to view and appreciate some of Monet's great works.



FURTHER INFORMATION

Program highlights

SYMPOSIUM: Impressions of Monet

Sat 11 May, 1.30–4.30pm

Hear renowned international and local speakers address key themes of the exhibition.

Welcome Tony Ellwood, NGV

Speakers Colta Ives, Curator Emerita, The Metropolitan Museum of Art, New York; Marianne Mathieu, Assistant Director and Curator, Musée Marmottan Monet, Paris; Sophie Matthiesson, Curator, International Art, NGV; Professor Emeritus Virginia Spate; Dr Matthew Martin, Assistant Curator, International Decorative Arts and Antiquities, NGV

Cost \$60 Adult / \$50 NGV Member / \$55 Concession, bookings essential (tea/coffee included)

Venue Clemenger BBDO Auditorium, NGV International

FREE FILM SERIES: Capturing Paris

Every Sun, 7 Jul – 1 Sep, 2pm

- *Rififi* (1955)
- *Paris je t'aime* (2006)
- *Bande à part* (1964)
- *Charade* (1963)
- *Before Sunset* (2004)
- *Lovers on the Bridge* (1991)
- *Amélie* (2001)
- *Moulin Rouge!* (2001)
- *Midnight in Paris* (2011)

Cost Free (no exhibition entry)

NEW EVENT

Friday Nights at Monet

Fri 5 Jul–Fri 6 Sep, 5.30–9.30pm

Make a date with Monet on Friday nights. Feast on great food, share a drink or two with friends and enjoy pop-up talks, DJs and a stellar line-up of bands: Vance Joy, Robert Forster, Machine Translations, Good Heavens, Brighter Later, Halfway, Courtney Barnett, Seekae, Harmony and Jae Laffer.

Visit ngv.vic.gov.au for more information

SHORT COURSE: Visions of paradise – the art & history of garden design

Sat 25 May – Sat 20 Jul, 2pm

- The Italian Renaissance garden: Dr Luke Morgan
- Italian Baroque gardens: Dr Katrina Grant
- 17th century French gardens: Dr Luke Morgan
- Picturesque gardens in 18th century England: Dr Katrina Grant
- Islamic gardens: Dr Susan Scollay
- Chinese gardens: Assoc Prof Greg Missingham
- Japanese gardens: Dr Eiichi Tosaki
- Monet's garden: Sophie Matthiesson
- Contemporary garden design in Australia: Dr Catherin Bull AM

Cost \$20 A / \$16 M / \$18 C (per lecture), \$170 A / \$125 M / \$152 C (full series)

Venue Clemenger BBDO Auditorium, NGV International

INTRODUCTORY TALK: More on Monet

Fri 10 May, 11am, 1pm & 3pm

Every Sat & Sun, 12.30pm (from 12 May)

Discover Monet's life, art and influence with an illustrated introductory talk.

Cost \$8

Venue Clemenger BBDO Auditorium, NGV International

The Great Hall High Tea

Sun 12 May, 9 Jun, 14 Jul, 11 Aug & 8 Sep, 2 – 4pm

Join us for a *Monet's Garden* inspired high tea with live music under the stunning stained glass ceiling in the Great Hall.

Cost \$70 Adult / \$63 NGV Member / \$35 Children / Under 5 yrs free

5% Senior citizen discount. Excludes exhibition entry, bookings essential. Call 03 8620 2440 or email GreatHallHighTea@ngv.vic.gov.au

Visit www.ngv.vic.gov.au/visit/places-to-eat to see the full catering offers available.

Visit ngv.vic.gov.au/whats-on for a full range of programs offering diverse audiences with a variety of talks, classes, films, live music and kids programs.

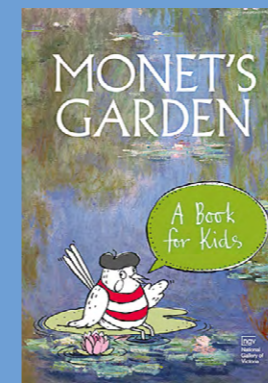
(COVER)
Claude Monet
Waterlilies (Nymphéas) 1903 (detail)
Musée Marmottan Monet, Paris
Gift of Michel Monet, 1966 (inv. 5163)
© Patrice Schmidt / Musée d'Orsay
distribution RMN

Publications



Monet's Garden:
The Musée Marmottan Monet, Paris
Publisher: National Gallery of Victoria
305 mm x 240 mm, hardback
and paperback, 216 pages
Fully illustrated in colour
RRP: \$69.95 AUD (HB); \$39.95 AUD (PB)

Monet's Garden traces the evolution of the artist's iconic home at Giverny in northern France, his private life, his intrepid travels abroad and the paintings of his garden paradise.



Monet's Garden: A Book for Kids
Publisher: National Gallery of Victoria
297 mm x 210 mm, hardback, 72 pages
Fully illustrated in colour
Category: Children's books
RRP: \$14.95 AUD

Monet's Garden: A Book for Kids is an exciting new publication written and developed especially for children.

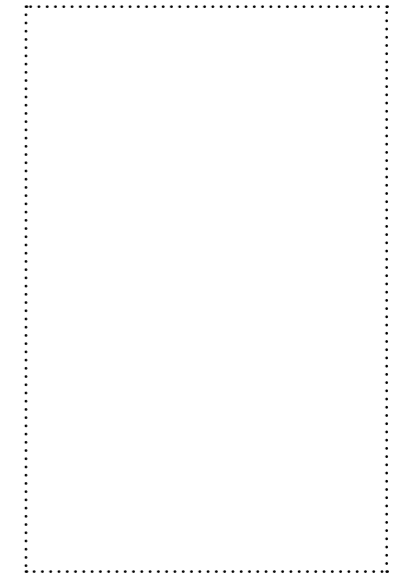
Richly illustrated with images of works, lively texts and creative design, the publication introduces children to Claude Monet, one of the most highly acclaimed artists of the twentieth century, his life and his works.

Throughout the book children are guided by mascot Pierre, a smart garden wren, who entertains and engages young readers with questions and fascinating facts.

MEDIA CONTENT

The attached USB contains a selection of high-resolution imagery from the exhibition.

The caption document is also available on the USB, and we request that you adhere to the copyright guidelines outlined in this document.



Contact

Jemma Altmeier

Senior Coordinator, Media and Public Affairs

jemma.altmeier@ngv.vic.gov.au

03 8620 2345 | 0417 575 088

Exhibition Information

Monet's Garden: The Musée Marmottan Monet, Paris

10 May – 8 September 2013

NGV International

180 St Kilda Road

Open daily, 10am – 5pm

Entry fees apply

Adult \$26.00

Child \$10.00

Concession \$22.50

Family \$65.00

NGV Member Adult \$21.00

NGV Member Family \$50.00

ngv.vic.gov.au

Principal Sponsor



Principal Donor



Presented by



Major Sponsor



Tourism & Media Partners



Supported by



Wine Sponsor

Exhibition organised with

